


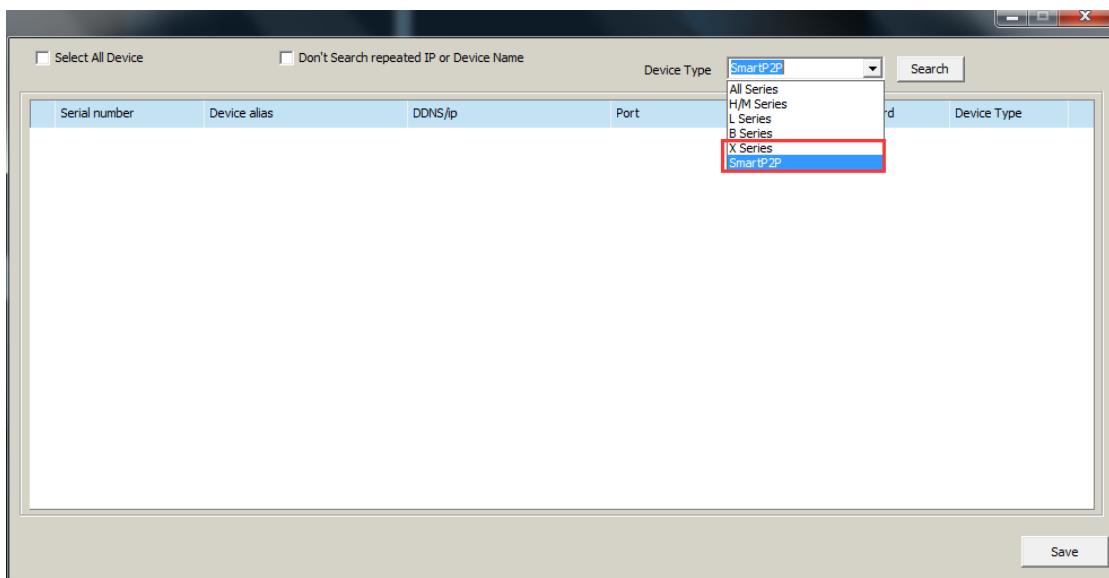
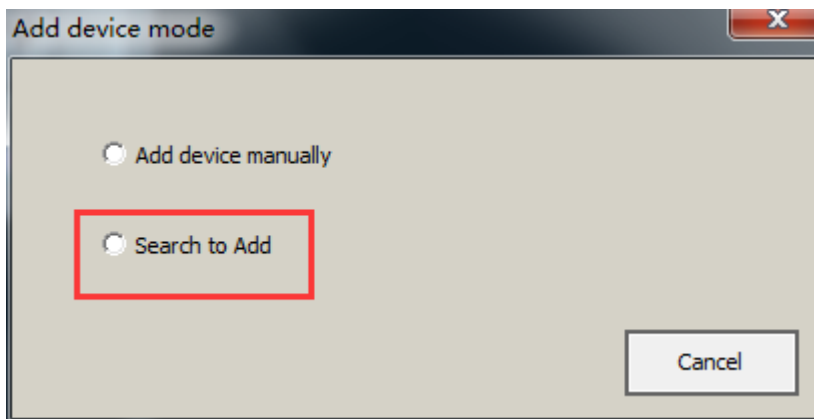
## Windows PC software iSmartviewPro Operation Guide



1. Please connect the camera to network, and make sure it is working.
2. Please download PC software "iSmartviewPro" to your computer, click this link to download PC software <http://www.wansview.com/Service/download/23.html> or install it from CD.

3. Run the PC software on computer, then click icon  to add camera to PC software.

If your computer and camera is in the same Lan, please select search to add camera, Device type please select X series or SmartP2P



Select All Device       Don't Search repeated IP or Device Name      Device Type: X Series      Search

Serial number	Device alias	DDNS/IP	Port	Account	Password	Device Type
<input checked="" type="checkbox"/> 18	750GB demo	192.168.10.132	10750	admin	*****	X Series
<input type="checkbox"/> 17	628GB demo	192.168.10.219	10629			X Series
<input type="checkbox"/> 16	626GBdemo	192.168.10.216	10626			X Series
<input type="checkbox"/> 15	630GB demo	192.168.10.231	10631			X Series
<input type="checkbox"/> 14	754GC demo	192.168.10.173	10754			X Series
<input type="checkbox"/> 13	cpb demo	192.168.10.10	9597			X Series
<input type="checkbox"/> 12	625GB demo	192.168.10.164	10800			X Series
<input type="checkbox"/> 11	780GB demo	192.168.10.217	10780			X Series
<input type="checkbox"/> 10	620GB demo	192.168.10.210	10620			X Series
<input type="checkbox"/> 9	631GB demo	192.168.10.203	10632			X Series
<input type="checkbox"/> 8	624GB demo	192.168.10.235	10755			X Series
<input type="checkbox"/> 7	IPCamera	192.168.10.102	7508			X Series
<input type="checkbox"/> 6	790GAdemo	192.168.10.195	10790			X Series
<input type="checkbox"/> 5	625GAdemo	192.168.10.233	10710			X Series
<input type="checkbox"/> 4	751GA demo	192.168.10.211	10751			X Series
<input type="checkbox"/> 3	701GA demo	192.168.10.174	8086			X Series
<input type="checkbox"/> 2	620GA demo	192.168.10.240	10763			X Series

Save

If your computer and camera is not in the same Lan, please select Add device manually.

Add device mode

Add device manually

Search to Add

Cancel

Device Type if you select SmartP2P, DDNSS/IP please input camera's DID number, like VIEW-XXXXX-XXXXX

Edit device information

Device alias  \*

Change

Device Type: SmartP2P \*

DDNS/IP  \*

Port  \*

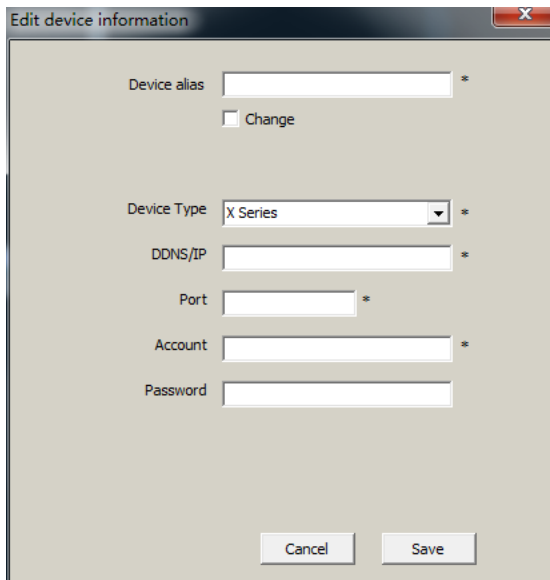
Account  \*

Password

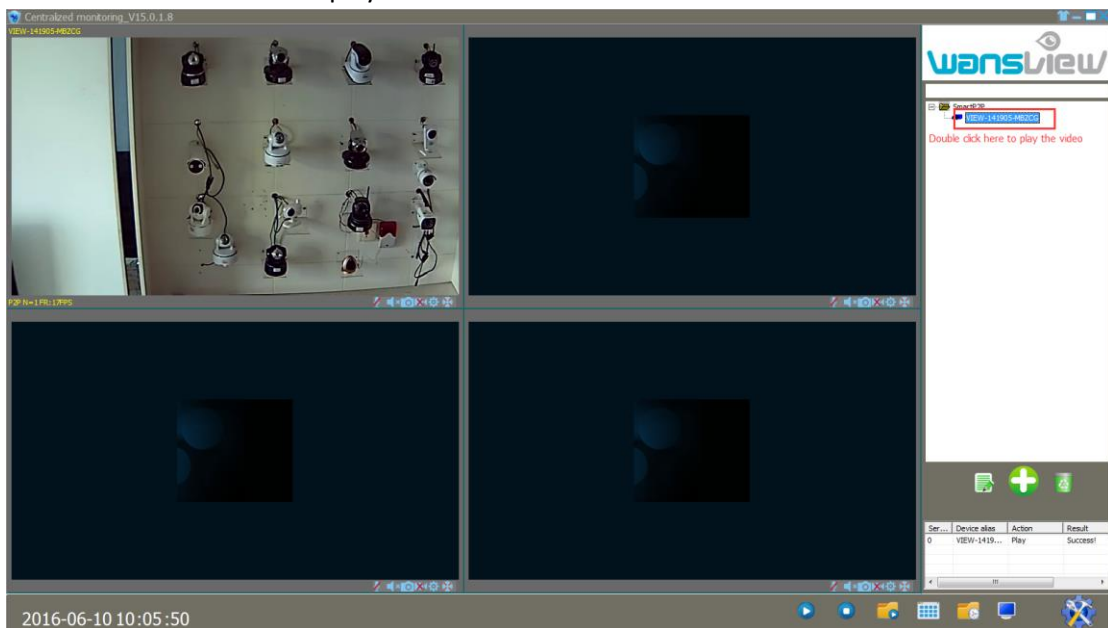
Cancel      Save


Device Type if you select X series, DDNS/IP please input camera's DDNS or Wan IP address.

Note: Use DDNS or Wan IP to view the camera remotely, you need to do port forwarding in router setting.

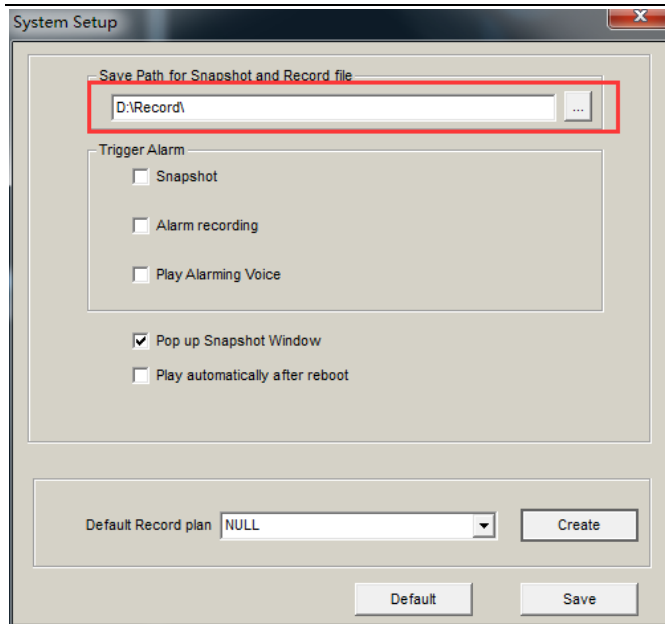


4. Double click the camera to play the video

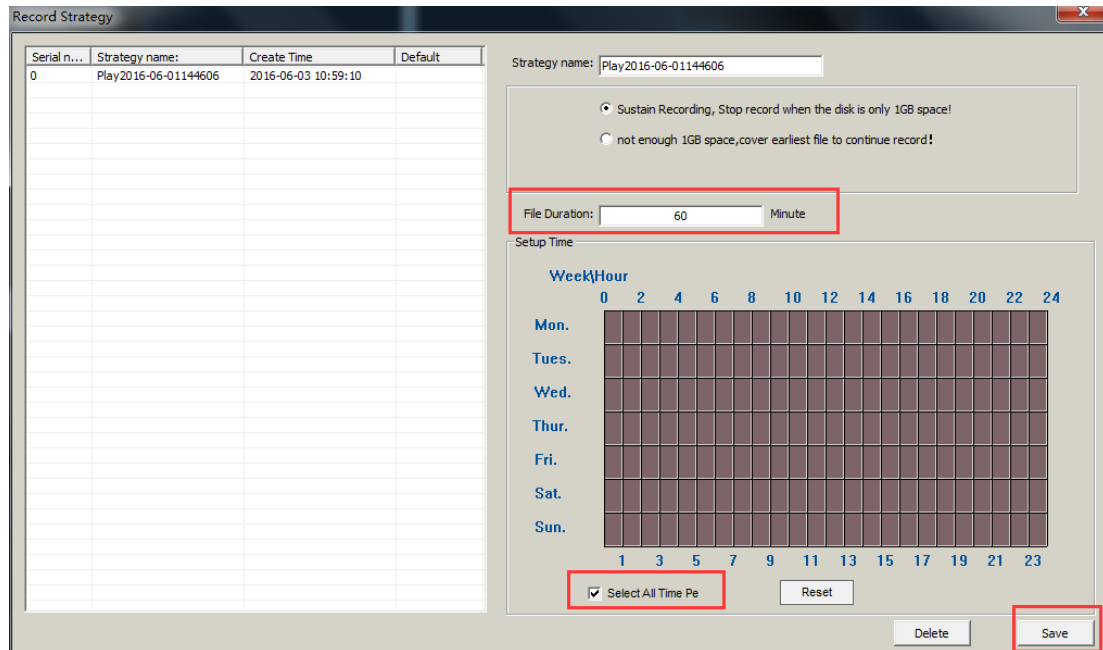


5. Click  to set record path and create plan record

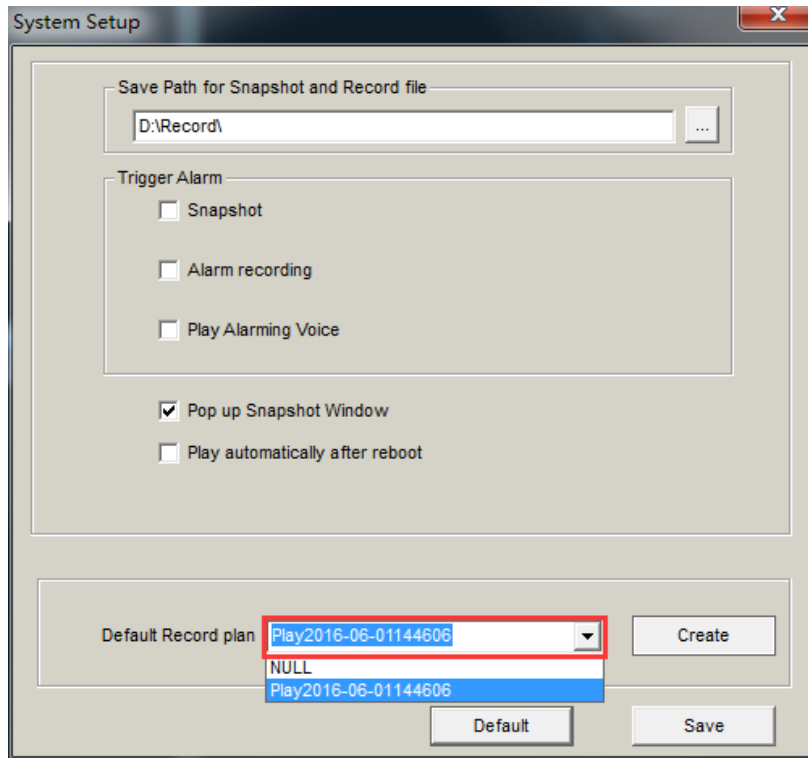
Set record path:




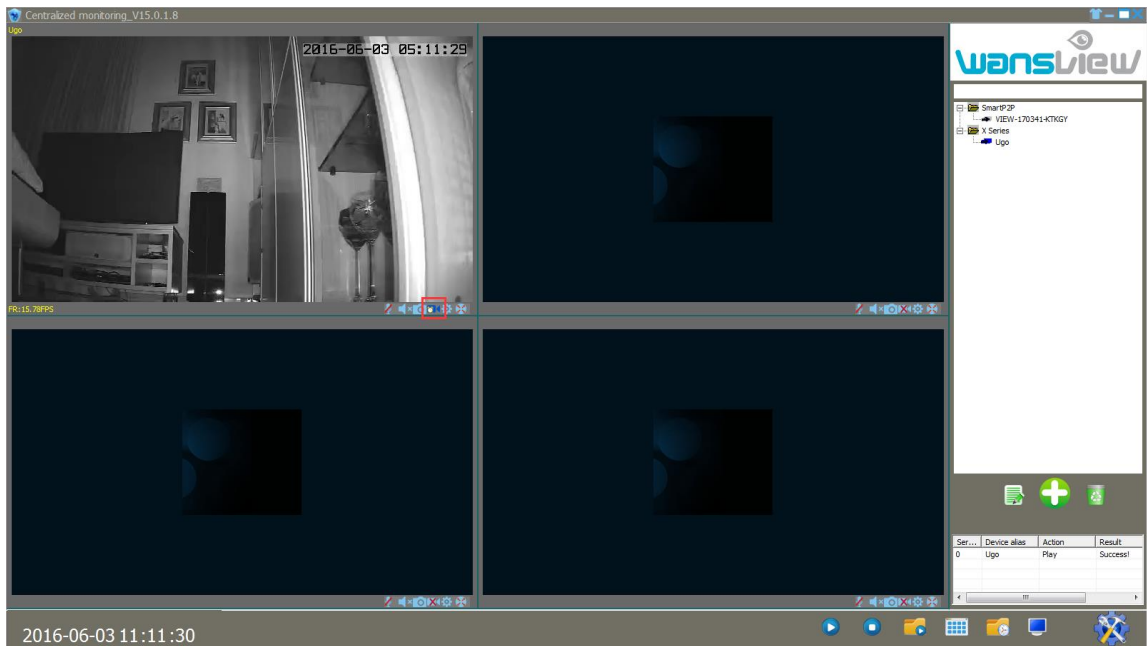
Create Plan Record: Click Create to create plan record(set record time length up to 60 minutes, select All time, click save)



Then select the record plan that you set, then click save to complete.



6. Back to live stream screen, you will see this icon , which meaning it is recording to computer.



Final, go to the record path that you set can check the videos recorded on computer.

